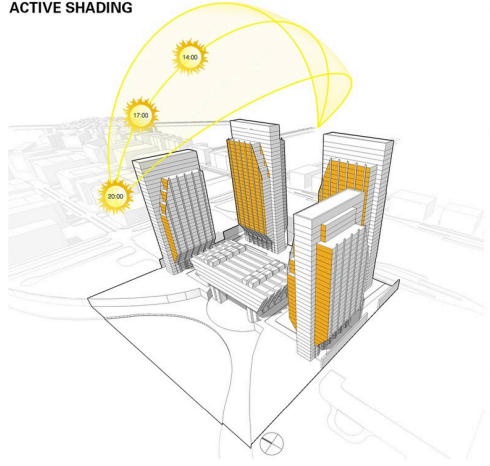
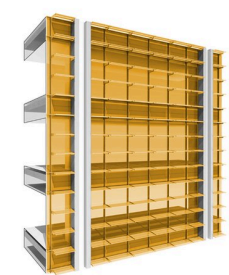


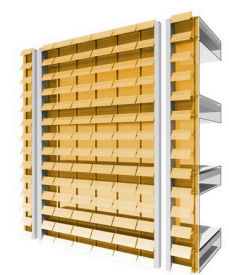
**ACTIVE SHADING**



**PASSIVE SHADING**



**ACTIVE SHADING**







# Abu Dhabi Global Market Square

Abu Dhabi, United Arab Emirates

Set on a previously undeveloped island, the five-building, 290,000-square-meter Abu Dhabi Global Market Square complex is the anchor for the emirate's new CBD. Comprising four office towers and the headquarters building for the Abu Dhabi Global Market, an international financial center, the complex creates a signature image for downtown while providing an efficient, premier office environment. The complex also promotes a public, walkable ground plane and emphasizes sustainability.

The distinctive new headquarters building is an iconic, four-level facility. Glass-enclosed with a roof the size of a football field, the building is raised 27 meters above a 49-meter-diameter water feature on massive granite piers. The four structural piers house the stairs, mechanical risers and service elements for the headquarters. The building projects an image of strength and solidity as it overlooks the water facing back toward the city's existing downtown.

Four office towers frame the headquarters building: two at 31 stories and the other two at 37 stories. The first full office floor of each building starts 34 meters above the ground level, providing a highly transparent, open lobby and elevating the views on all tenant floors. At plaza level, the buildings sparingly touch the site, and indoor and outdoor spaces seamlessly blend to create a large, landscaped, pedestrian-friendly environment that connects the complex. Beneath the plaza, a two-story retail podium weaves through the development, providing upscale shopping along the waterfront.

The project emphasized a sustainable design approach throughout. One of the main initiatives involved the environmentally responsive enclosure system that uses a mechanically ventilated cavity and a double-skin façade system over large portions of the office buildings. These elements help mitigate the 40 °F interior-exterior temperature differential. The double-skin cavities run the entire height of the four office towers. Within the cavities, active solar shades track and adjust for the sun angle in order to provide optimal shading to the building's interior. Active lighting controls also help balance natural and artificial light. Because of these and other measures, the complex became the first integrated development in Abu Dhabi to be certified LEED-CS Gold.

## Project Data

### SIZE

5,698,000 sf total

250,000 sf retail

Towers 1 + 2:

31 stories

1,302,400 sf office

Towers 3 + 4:

37 stories

1,605,800 sf office

Abu Dhabi Global Market Headquarters:

244,000 sf

### FEATURES

5,000 parking spaces

LEED Gold

### CLIENT

Mubadala Real Estate & Infrastructure

## Recognition & News

### RECOGNITION

2013 Winner, Best Tall Building Middle East & Africa – Council on Tall Buildings and Urban Habitat

2013 Outstanding Project of the Year, Big Project Middle East Awards

2013 Mixed-Use Development, Abu Dhabi – The Arabian Property Awards

2013 Office Development, Abu Dhabi – The Arabian Property Awards

### NEWS

ENR Midwest Names GP 2020 Design Firm of the Year

James Goettsch Honored With CTBUH Lifetime Achievement Award

GP Partners Goettsch and De Santis to Present at CTBUH 2018 Middle East Conference

Abu Dhabi Global Market Square Wins CTBUH 2013 Best Tall Building Award, Middle East & Africa